

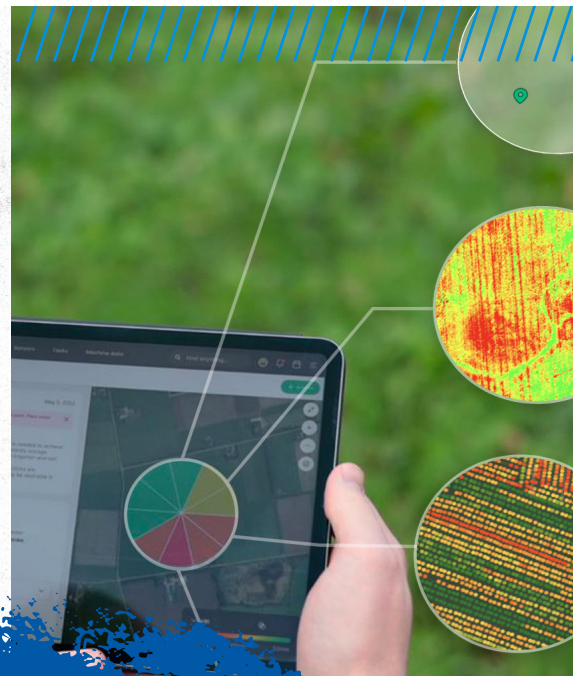
PRECISE MEASUREMENTS FOR PRECISION IRRIGATION

With Reinke Direct ET™ by CropX, Reinke customers now have access to the **only commercially available technology that directly measures the Actual Evapotranspiration (ETa)** of a crop, mounted on a center pivot irrigation system.

Track field-specific crop water use over a broad area in real time!

 **Reinke** + cropx + YOU

FOR MORE DETAILS, CONTACT YOUR
LOCAL REINKE DEALER



PRECISE MEASUREMENTS FOR PRECISION IRRIGATION



Reinke



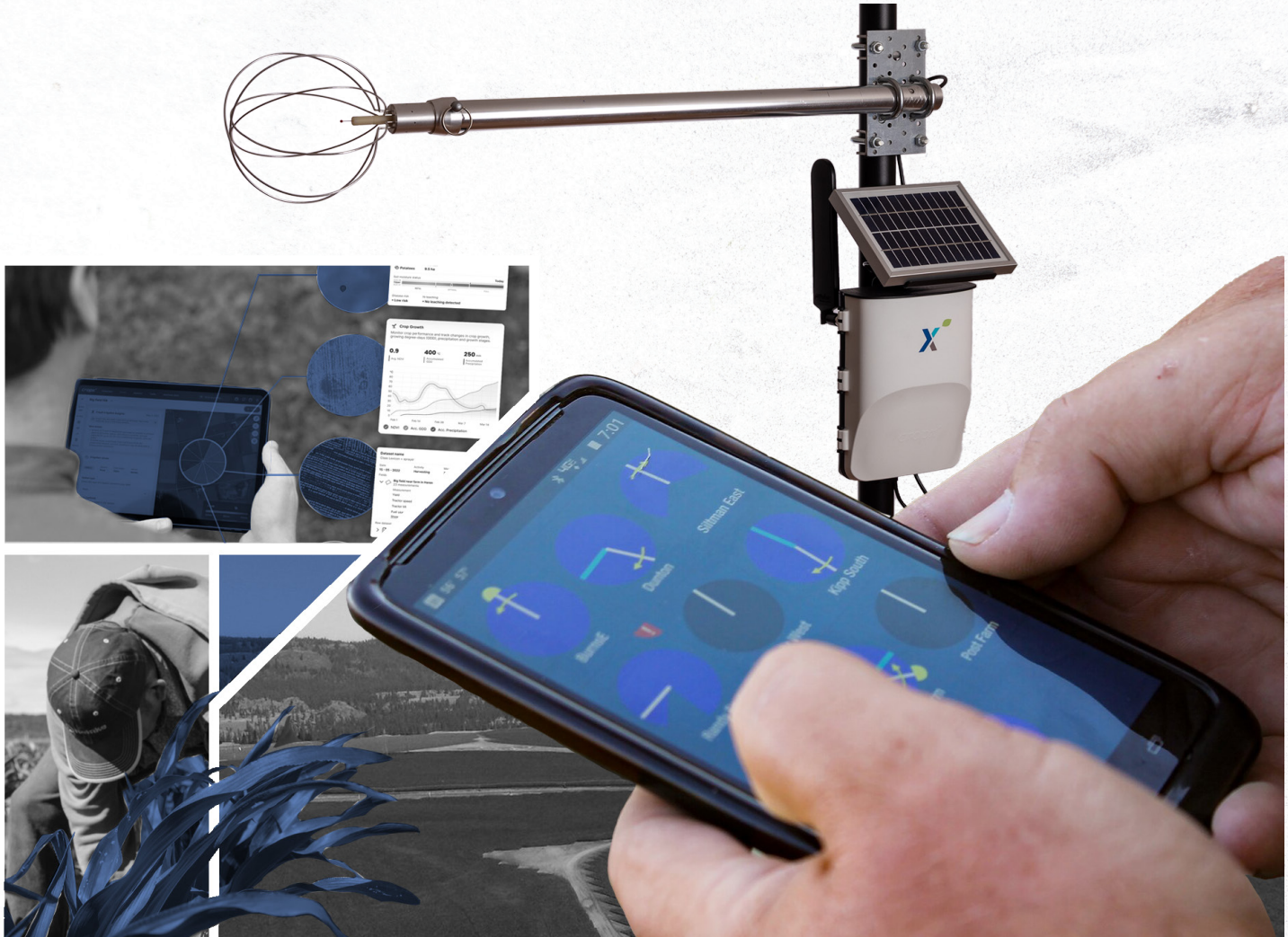
cropx



YOU

ABOLDNEWERA.COM

PRECISE MEASUREMENTS FOR PRECISION IRRIGATION



Reinke + cropx + you

With Reinke Direct ET™ by CropX, Reinke customers now have access to the **only commercially available technology that directly measures the Actual Evapotranspiration (ETA)** of a crop, mounted on a center pivot irrigation system. Track field-specific crop water use over a broad area in real time!

CONTACT YOUR LOCAL REINKE DEALER TO LEARN MORE

ABOLDNEWERA.COM

PRECISE MEASUREMENTS FOR PRECISION IRRIGATION

With Reinke Direct ET™ by CropX, Reinke customers now have access to the **only commercially available technology that directly measures the Actual Evapotranspiration (ETa)** of a crop, mounted on a center pivot irrigation system. Track field-specific crop water use over a broad area in real time!

 **Reinke** + *cropx* + you

**CONTACT YOUR LOCAL REINKE
DEALER TO LEARN MORE**



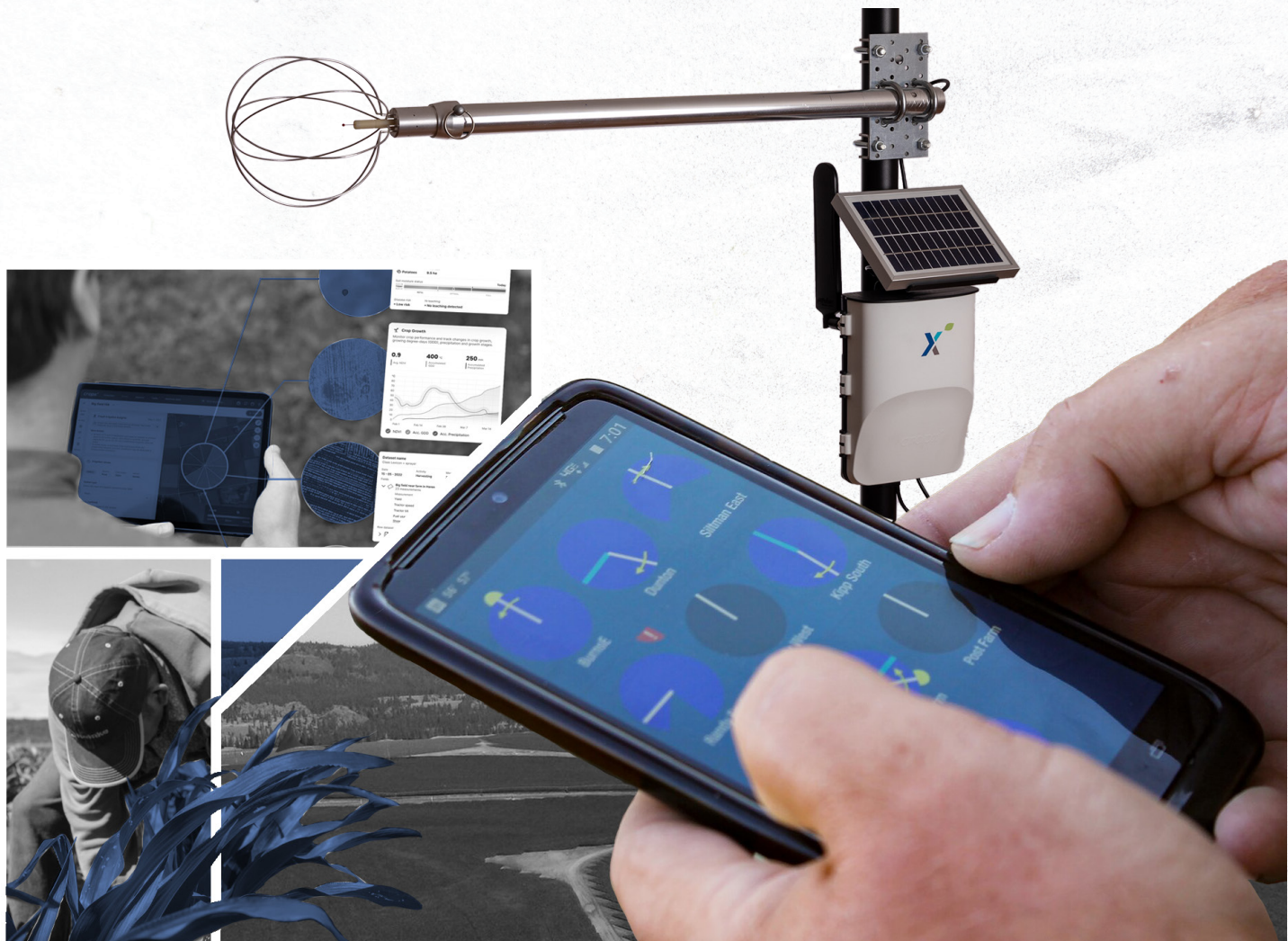
**PRECISE MEASUREMENTS FOR
PRECISION IRRIGATION**

Reinke + cropx + you



**CONTACT YOUR LOCAL REINKE
DEALER TO LEARN MORE**

PRECISE MEASUREMENTS FOR PRECISION IRRIGATION



 **Reinke** +  **cropx** +  **You**

With Reinke Direct ET™ by CropX, Reinke customers now have access to the **only commercially available technology that directly measures the Actual Evapotranspiration (ETa)** of a crop, mounted on a center pivot irrigation system. Track field-specific crop water use over a broad area in real time! When Reinke Direct ET by CropX sensors and soil moisture sensors are used together, our Irrigation Planning capability offers the most complete picture of field water movement, from roots to shoots!

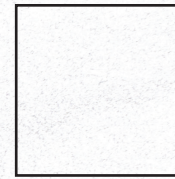
ASK US TODAY!  **Reinke**



PRECISE MEASUREMENTS FOR PRECISION IRRIGATION

Reinke + cropx + you





REINKE DIRECT ET™ BY CROPX

*FOR MORE DETAILS, CONTACT YOUR
LOCAL REINKE DEALER*



PRECISE MEASUREMENTS FOR PRECISION IRRIGATION

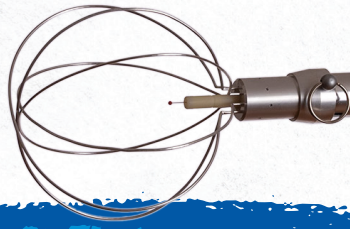
REINKE DIRECT ET™ BY CROPX



 **Reinke** + *cropx* + **YOU**



Reinke + cropx + you



REINKE DIRECT ET™ BY CROPX

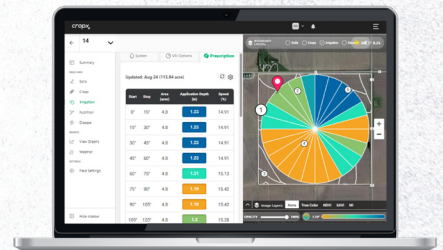


PRECISE MEASUREMENTS FOR PRECISION IRRIGATION

With Reinke Direct ET by CropX, Reinke customers now have access to the **only commercially available technology that directly measures the Actual Evapotranspiration (ET_a)** of a crop, mounted on a center pivot irrigation system. Track field-specific crop water use over a broad area in real time! When Reinke Direct ET by CropX sensors and soil moisture sensors are used together, our Irrigation Planning capability offers the most complete picture of field water movement, from roots to shoots!

NOT ALL ET MEASUREMENTS ARE CREATED EQUAL

- **Reference ET (ET_o)** is the total water use of a well-watered lawn. This is available through many weather service websites, apps, and radio reports.
- **Crop ET (ET_c)** is ET_o multiplied by a crop coefficient (K_c) and is used to estimate the water use of a specific crop type that has no water stress.
- **Model ET** uses satellite-based infrared sensing methods to only approximate Actual ET (ET_a) by relating air temperature changes to canopy temperatures. These methods are only accurate when continuously calibrated with Actual ET sensors.
- **Actual ET (ET_a)** in contrast is the actual water use of a specific field, measured directly and in real-time.



USE REAL-TIME INFORMATION DIRECTLY FROM THE FIELD

Reinke Direct ET by CropX sensors add a valuable set of information to the already powerful Irrigation Planning capability of the CropX agronomic farm management system. Users can access field maps, tap into irrigation insights, take advantage of variable rate irrigation, and track irrigation events for streamlined record-keeping.

REINKE DIRECT ET BY CROPX PROVIDES:

- **Actual Evapotranspiration (ETa) data:** Reinke Direct ET by CropX sensors measure and monitor the water use of your crop daily, in real time. Don't wait days or weeks for critical crop information! ETa is measured over a broad area of your field.
- **Irrigation Insights:** The CropX Irrigation Planning capability uses Direct ET sensor data to present easy-to-understand insights into the water needs of your crop. It even makes irrigation recommendations for you.
- **Water Use and Availability Monitoring:** Crop water use and water stress data coupled with soil water availability monitoring from soil sensors ensures users can make the most precise, profitable, and responsible irrigation decisions with confidence.

The Reinke Direct ET by CropX Package Includes:

- CropX ET sensor
- CropX telemetry device
- Pivot-mounted installation kit

*FOR MORE DETAILS, CONTACT YOUR
LOCAL REINKE DEALER*



PRECISE MEASUREMENTS FOR PRECISION IRRIGATION

REINKE
DIRECT ET™
BY CROPX

Reinke + cropx + YOU



PRECISE MEASUREMENTS FOR PRECISION IRRIGATION

With Reinke Direct ET™ by CropX, Reinke customers now have access to the **only commercially available technology that directly measures the Actual Evapotranspiration (ETa)** of a crop, mounted on a center pivot irrigation system.

Track field-specific crop water use over a broad area in real time!

 **Reinke** + cropx + YOU

FOR MORE DETAILS, CONTACT YOUR
LOCAL REINKE DEALER



PRECISE MEASUREMENTS FOR PRECISION IRRIGATION



Reinke



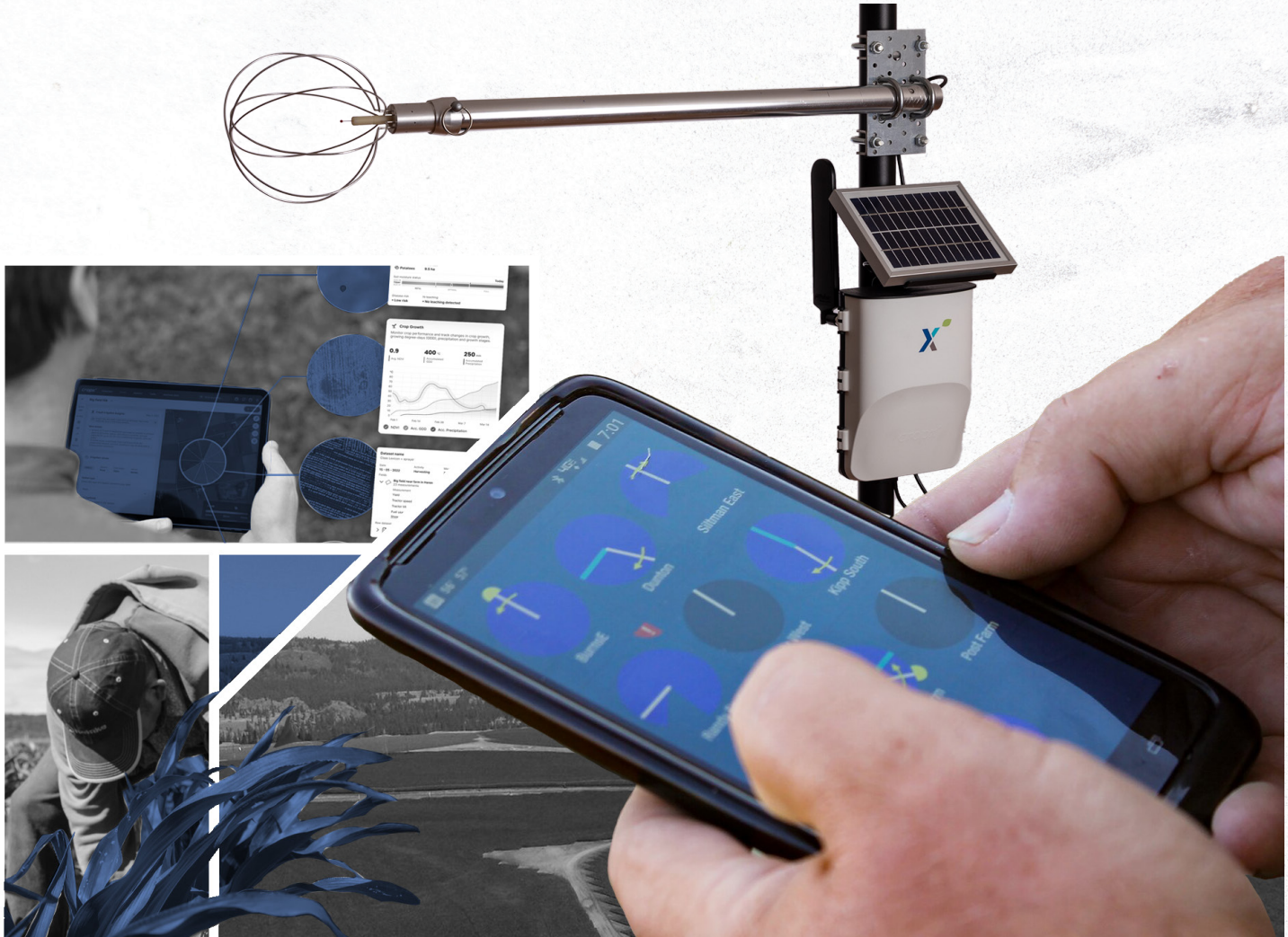
cropx



you

ABOLDNEWERA.COM

PRECISE MEASUREMENTS FOR PRECISION IRRIGATION



Reinke + **cropx** + **YOU**

With Reinke Direct ET™ by CropX, Reinke customers now have access to the **only commercially available technology that directly measures the Actual Evapotranspiration (ETA)** of a crop, mounted on a center pivot irrigation system. Track field-specific crop water use over a broad area in real time!

CONTACT YOUR LOCAL REINKE DEALER TO LEARN MORE

ABOLDNEWERA.COM

PRECISE MEASUREMENTS FOR PRECISION IRRIGATION

With Reinke Direct ET™ by CropX, Reinke customers now have access to the **only commercially available technology that directly measures the Actual Evapotranspiration (ETa)** of a crop, mounted on a center pivot irrigation system. Track field-specific crop water use over a broad area in real time!

 **Reinke** + *cropx* + you

**CONTACT YOUR LOCAL REINKE
DEALER TO LEARN MORE**



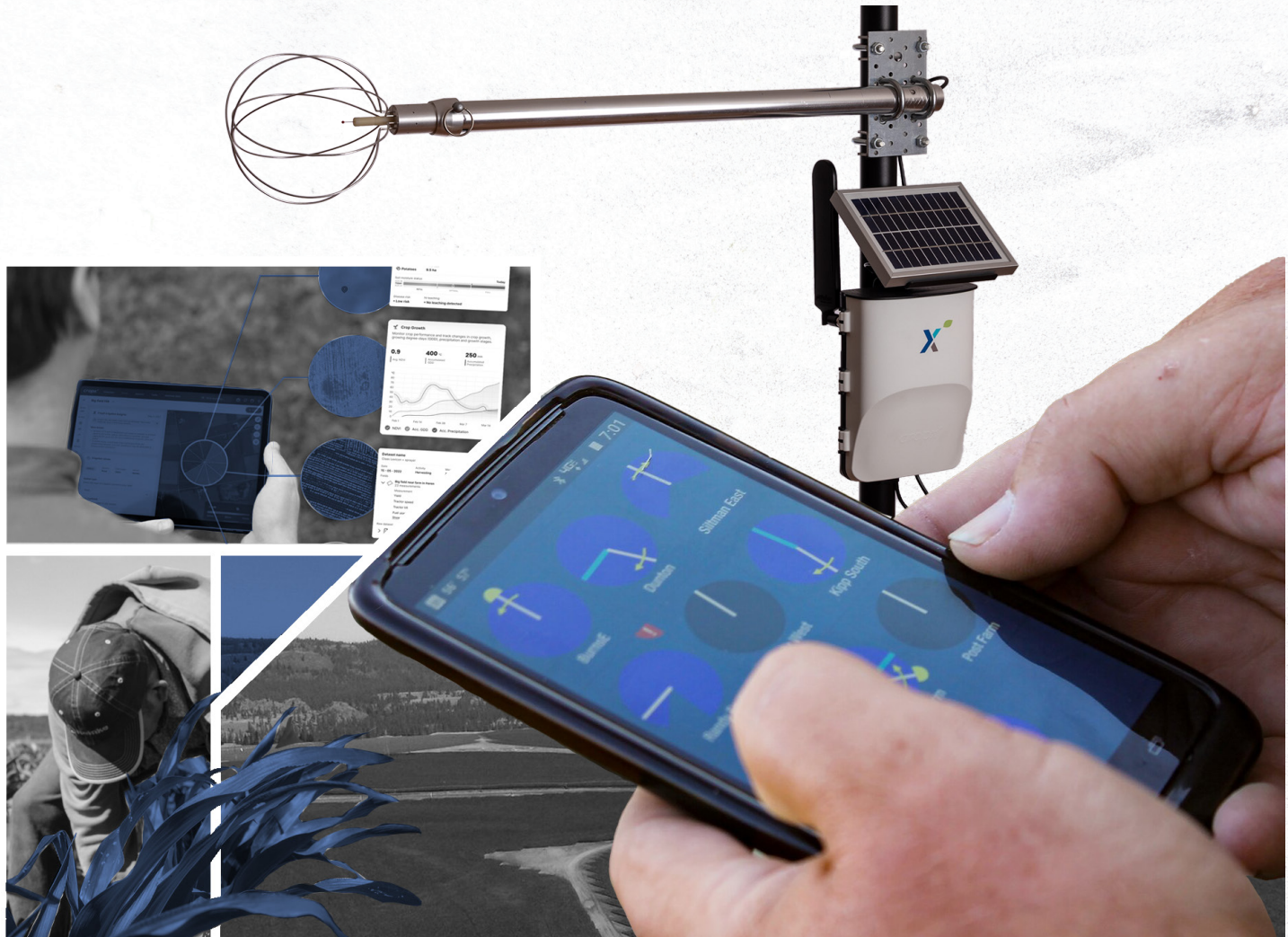
**PRECISE MEASUREMENTS FOR
PRECISION IRRIGATION**

Reinke + cropx + YOU



**CONTACT YOUR LOCAL REINKE
DEALER TO LEARN MORE**

PRECISE MEASUREMENTS FOR PRECISION IRRIGATION



 **Reinke** +  **cropx** +  **YOU**

With Reinke Direct ET™ by CropX, Reinke customers now have access to the **only commercially available technology that directly measures the Actual Evapotranspiration (ETa)** of a crop, mounted on a center pivot irrigation system. Track field-specific crop water use over a broad area in real time! When Reinke Direct ET by CropX sensors and soil moisture sensors are used together, our Irrigation Planning capability offers the most complete picture of field water movement, from roots to shoots!

ASK US TODAY!  **Reinke**



PRECISE MEASUREMENTS FOR PRECISION IRRIGATION

Reinke + cropx + you





REINKE DIRECT ET™ BY CROPX

*FOR MORE DETAILS, CONTACT YOUR
LOCAL REINKE DEALER*



PRECISE MEASUREMENTS FOR PRECISION IRRIGATION

REINKE DIRECT ET™ BY CROPX



 **Reinke** + *cropx* + **YOU**



Reinke + cropx + YOU

REINKE DIRECT ET™ BY CROPX

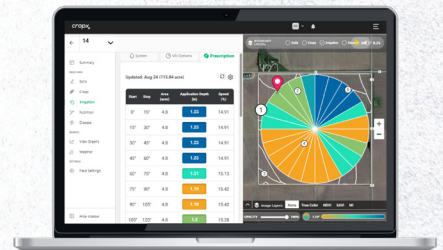


PRECISE MEASUREMENTS FOR PRECISION IRRIGATION

With Reinke Direct ET by CropX, Reinke customers now have access to the **only commercially available technology that directly measures the Actual Evapotranspiration (ETa)** of a crop, mounted on a center pivot irrigation system. Track field-specific crop water use over a broad area in real time! When Reinke Direct ET by CropX sensors and soil moisture sensors are used together, our Irrigation Planning capability offers the most complete picture of field water movement, from roots to shoots!

NOT ALL ET MEASUREMENTS ARE CREATED EQUAL

- **Reference ET (ETo)** is the total water use of a well-watered lawn. This is available through many weather service websites, apps, and radio reports.
- **Crop ET (ETc)** is ETo multiplied by a crop coefficient (Kc) and is used to estimate the water use of a specific crop type that has no water stress.
- **Model ET** uses satellite-based infrared sensing methods to only approximate Actual ET (ETa) by relating air temperature changes to canopy temperatures. These methods are only accurate when continuously calibrated with Actual ET sensors.
- **Actual ET (ETa)** in contrast is the actual water use of a specific field, measured directly and in real-time.



USE REAL-TIME INFORMATION DIRECTLY FROM THE FIELD

Reinke Direct ET by CropX sensors add a valuable set of information to the already powerful Irrigation Planning capability of the CropX agronomic farm management system. Users can access field maps, tap into irrigation insights, take advantage of variable rate irrigation, and track irrigation events for streamlined record-keeping.

REINKE DIRECT ET BY CROPX PROVIDES:

- **Actual Evapotranspiration (ETa) data:** Reinke Direct ET by CropX sensors measure and monitor the water use of your crop daily, in real time. Don't wait days or weeks for critical crop information! ETa is measured over a broad area of your field.
- **Irrigation Insights:** The CropX Irrigation Planning capability uses Direct ET sensor data to present easy-to-understand insights into the water needs of your crop. It even makes irrigation recommendations for you.
- **Water Use and Availability Monitoring:** Crop water use and water stress data coupled with soil water availability monitoring from soil sensors ensures users can make the most precise, profitable, and responsible irrigation decisions with confidence.

The Reinke Direct ET by CropX Package Includes:

- CropX ET sensor
- CropX telemetry device
- Pivot-mounted installation kit

*FOR MORE DETAILS, CONTACT YOUR
LOCAL REINKE DEALER*



PRECISE MEASUREMENTS FOR PRECISION IRRIGATION

REINKE
DIRECT ET™
BY CROPX

Reinke + cropx + YOU

